



FLOODWATCH

Educating, Planning, Protecting

The Official Newsletter of the Louisiana Floodplain Management Association

INSIDE THIS EDITION

From the Director's Desk	2
Floodplain Management 101 Recap	3
News and Happenings	5
Calendar of Events	16
Board of Directors	23



Newsletter Committee

Vicki Holmes, Editor/Chair

Mitch McDonald, Contributor

Erin Johnson, Photographer

From the Director's Desk

By: *Theodore DeBaene, P.E., CFM Executive Director*



FEMA's Risk Rating 2.0

One of the latest buzz terms in Floodplain Management circles is Risk Rating 2.0. In an effort to become conversant on the issue, I logged into the ASFPM's Flood Insurance Committee Call. My timing was excellent as FEMA had just made a big announcement on Risk Rating 2.0, two days earlier.

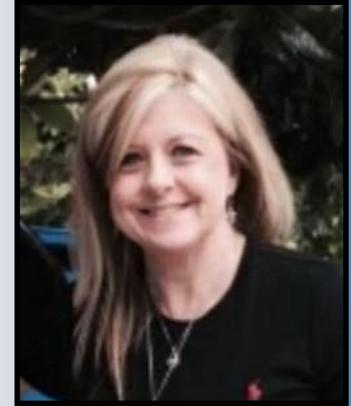
Risk Rating 2.0 is a new approach to setting flood insurance premiums. It is felt that the current system is not comprehensive enough. It does not properly assess risk. The only tangible consideration at this time is that it must reflect replacement costs. The more expensive the dwelling the higher the rate. There was no information on how this would be accomplished. There is also no information on what else will be considered.

Apparently, all kinds of data will be input into a big black box. Then individual information on a specific dwelling will be input and the rate will pop out.

This amazing device will be ready for nationwide utilization in April, 2020.

Floodplain Management 101

Melissa Becker, CFM
 LFMA Region 6 Representative
 Membership Chair, Treasurer



As I worked to update our membership records, I noticed a turnover in local Floodplain Managers due to retirement or change of jobs. I spoke with many members who expressed a need for some basic training. It seems some were told “You’re the Floodplain Manager”, but what does that really mean? While attending a Watershed Discovery meeting in my area, that need was again vocalized with one attendee saying “**I don’t know what I don’t know**”! I happened to be sitting at a table with Ben Pylant and Josh Walker with Halff & Associates. As Region 6 Representative, I wanted to reach out to the members in my Region and Halff was very interested in supporting LFMA. They offered to partner with LFMA and my office, the Rapides Area Planning Commission to bring the training to Alexandria. Once the word got out, the interest expanded outside of my Region. We ended up with 40 registrants. The presentation was just what was needed. We had a lot of interaction and the discussion and feedback from attendees was great. Here is a link to the presentation, <http://bit.ly/2E0mwrp>. It is my hope that other Region Reps will follow suit and set up training sessions in their regions with topics of local interest.

Floodplain Management 101

WHEN Feb. 22, 2019
8:30 a.m. to noon

WHERE Alexandria International Airport
Conference Room
1100 Frank Andrews Blvd.
Alexandria, LA 71303




INSTRUCTOR Ben Pylant, PE, CFM

TOPIC This training will focus on the NFIP and concepts of floodplain management, maps and studies, ordinance administration, and permits.

COST Free

Register online at <https://fma.memberclicks.net/2019floodplain101>

Sponsored by:

You can earn three CECs by completing the class.
 Questions? Contact Melissa Becker, CFM, at mbecker@rapcinfo.org or (318) 487-5401.

Floodplain Management 101, cont.



Josh Walker



Ben Pylant



Membership Renewal

Membership in the Louisiana Flood Plain Management Association includes representatives from all levels of government (floodplain administrators, permit officials, agency personnel), the private sector (planners, engineers, surveyors, realtors, bankers, lenders, and insurance agents), and the university community. Full members, any public or private professional or elected official involved in flood management, may vote on Association issues, serve on committees, and receive discounts on Association activities. Student members are full or part-time students with an interest in floodplain management. Although students cannot vote, they may participate on committees.

To become a member, please visit our [ONLINE MEMBERSHIP PORTAL](#).

You may also complete and mail the [LFMA Membership Application](#) or go to LFMA's webpage and fill out the online [form](#). Full membership dues are \$50 and student membership dues are \$20.



Availability of NAI How-To Guides to Achieve a Resilient Community

Submitted by Toby Fruge

In 2013, The ASFPM Board of Directors approved the development of seven *No Adverse Impact (NAI) "How-To-Guides."* This was a direct result of feedback from ASFPM members who used the NAI Toolkit which provided examples of NAI techniques, but didn't go into detail about how these techniques could be implemented in a "real world" setting. The ASFPM Foundation provided funding for the development of these *How-To-Guides*.

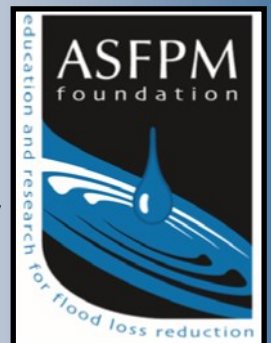
The NAI Toolkit identified seven "building blocks" or areas of community involvement that can have an impact, and the *How-To-Guides* are in alignment with these seven areas:

- Hazard identification and floodplain mapping
- Education and outreach
- Planning
- Regulations and development standards
- Mitigation
- Infrastructure
- Emergency Services

Six of the seven guides have been completed and are available on the ASFPM [website](#). Content for the seventh guide, *Emergency Services*, has been completed and is in its final design stage and will be posted to the website soon.

The *How-To-Guides'* ultimate goal is to encourage communities to take a different approach to managing development that results in reduced flood risk; this can be accomplished by incorporating NAI techniques into a community's flood risk reduction activities. The *How-To-Guides* break down the information by topic in a user-friendly way that is easily understood and that communities can apply to their own unique circumstances. The Foundation truly believes the more NAI techniques a community implements, the better prepared the community is for the next flood event – not if, but WHEN it occurs.

Communities striving for a more resilient future in the aftermath of a flood event should consider using these guides. The *How-To-Guides* can be found on the ASFPM website by [clicking here](#).



Jerri Daniels and Andy Bobe Promoted in Dewberry's Gulf Coast Offices

Fairfax, VA—February 6, 2019



Dewberry, a privately held professional services firm, announced that Jerri Daniels, CFM, has been promoted to associate vice president in the firm's New Orleans, Louisiana, office, and Andy Bobe, PE, has been promoted to senior associate in its Daphne, Alabama, office.

Jerri Daniels has been in the consulting industry for 18 years, and has been with Dewberry for nearly 10. She works in the firm's central water resources department and serves as the project manager for several Louisiana Department of Transportation and Development contracts. She focuses primarily on the implementation of the FEMA Cooperating Technical Partnership program, which includes updates to Flood Insurance Rate Maps.

Daniels earned a master's in geography from the University of Alabama (2000) and a bachelor's in biology-environmental science from Auburn University at Montgomery (1998). She is a member of the American Society of Civil Engineers (ASCE), Association of State Floodplain Managers, Texas Floodplain Management Association, and the Louisiana Floodplain Management Association where she serves as a Region II representative.

Andy Bobe is a senior project manager in the site/civil department, and has more than 16 years of experience in the industry. He works in a number of capacities within the department, including projects related to hydraulics, drainage, water and wastewater infrastructure, and transportation.

Bobe earned a bachelor's in civil engineering from the University of South Alabama (2003) and is a professional engineer in Alabama, Florida, and Mississippi. He is a member of ASCE and the National Council of Examiners for Engineering and Surveying.

About Dewberry

Dewberry is a leading, market-facing firm with a proven history of providing professional services to a wide variety of public- and private-sector clients. Recognized for combining unsurpassed commitment to client service with deep subject matter expertise, Dewberry is dedicated to solving clients' most complex challenges and transforming their communities. Established in 1956, Dewberry is headquartered in Fairfax, Virginia, with more than 50 locations and 2,000+ professionals nationwide. To learn more, visit www.dewberry.com.

National Dams Inventory Available for Public Access

The National Inventory of Dams (NID) is a congressionally authorized database documenting dams in the United States and its territories. It is maintained and published by the U.S. Army Corps of Engineers (USACE) and, in collaboration with FEMA, aims to obtain more accurate and complete information about dams. The NID is now available for public download.



Historically, the NID has been published every two years. Starting in 2019, the NID will be updated annually.

The NID consists of dams meeting at least one of the following criteria:

- High hazard potential classification - loss of human life is likely if the dam fails.
- Significant hazard potential classification - no probable loss of human life but can cause economic loss, environmental damage, disruption of lifeline facilities or impact other concerns.
- Equal to or exceed 25 feet in height and exceed 15 acre-feet in storage.
- Equal to or exceed 50 acre-feet storage and exceed 6 feet in height.

Data collection has been focused on the most reliable data sources, from the many federal and state government dam construction and regulation offices. In most cases, dams within the NID criteria are regulated (e.g., construction permit, inspection, and/or enforcement) by federal or state agencies, who have basic information on the dams within their jurisdiction.

To access and download the database visit: <http://nid.usace.army.mil>. For further information on the National Inventory of Dams visit: <https://www.fema.gov/2018-national-inventory-dams>.

600-acre marsh restoration complete in Cameron Parish

By [Tristan Baurick, NOLA.com | The Times-Picayune](#)

The state has rebuilt 600 acres of salt marsh along the rapidly eroding coast in southwest Louisiana.

The [Coastal Protection and Restoration Authority](#) spent about \$31 million restoring the Oyster Bayou marsh near the Calcasieu Ship Channel in Cameron Parish. Completed this month, the project included 2.5 miles of earthen terrace that will help protect the coastline from future erosion.

Saltwater intrusion from the Gulf of Mexico, hurricane damage and other factors had converted the marsh to shallow, open water in recent decades.

The CPRA used sediment dredged from the Gulf to fill in the marsh. The dredge site was about five miles south of Cameron Parish.

Full story [here](#).

Before



After



Times Picayune (2, 2017)
Photo by Tristan Baurick
NOLA.com | The Times-Picayune
© 2017 Times Picayune Group

Coastal projects draft plan discussed



The Louisiana Coastal Protection and Restoration Authority projects \$738 million in spending for the 2020 fiscal year, with \$505 million outlined for construction, according to its draft annual plan.

Bren Haase, CPRA executive director, discussed the draft plan during a public hearing Tuesday at the Lake Charles Civic Center. There are 12 active projects listed for the Southwest Region, with six in construction and six in the engineering and design phases. The region includes Calcasieu, Cameron and Vermilion parishes.

Some projects in construction include \$35.4 million in shoreline stabilization at Rockefeller Refuge; \$27 million for restoration at Rabbit Island; and \$26 million for Cameron-Creole freshwater introduction.

Full story [here](#).

CPRA Launches New Website Tool

The Louisiana Coastal Protection and Restoration Authority (CPRA) yesterday announced a new [website tool](#) that highlights past, current and future projects across Louisiana's 20 coastal parishes.

Using the existing website interface of the Coastal Information Management System (CIMS), the Parish Fact Sheets tool generates parish-specific data.

The tool features an interactive map that allows users to hover over and identify individual coastal Louisiana parishes for fact sheet generation. Fact sheets detail parish-specific coastal projects completed since CPRA's inception in 2007, work underway, and work outlined in the 2017 Coastal Master Plan to protect and restore the coast.

Read the rest [here](#).

Lake Pontchartrain Project Partnering Agreement Inked

Louisiana Governor, John Bel Edwards, participated last week in the signing ceremony of a project partnering agreement (PPA) with the Louisiana Coastal Protection and Restoration Authority (CPRA), USACE and the Pontchartrain Levee District (PLD) for the West Shore Lake Pontchartrain project.

The event at the PLD, 2069 Railroad Avenue, Lusher, Louisiana, were hosted by PLD President Ricky Bosco and PLD Executive Director Monica Gorman.

"The Coastal Master Plan called for this large-scale hurricane protection project, and now that we have the funding we're wasting no time in moving it forward. We have 60,000 people who will benefit by having their homes, families, jobs and communities better protected from the increasing threat of tropical storm surge," said Governor Edwards.

Full story [here](#).

Congratulations Jennifer Gerbasi!

External Stakeholder Working Group Announces New Members



Hazard Mitigation Assistance (HMA) recently announced the new members of the External Stakeholder Working Group (ESWG):

- | | | | |
|--------------------------|---|-------------------------|---|
| State / Territory | Jim Poppen
South Dakota | Local / Regional | Jennifer Gerbasi
Terrebonne Parish Consolidated Government, Louisiana |
| Tribal Nation | Kymmie Scott
Tolowa Dee ni', California | Federal (FEMA) | Daniel Jones Stacy Robarge-Silkner
Region VIII Region VII |

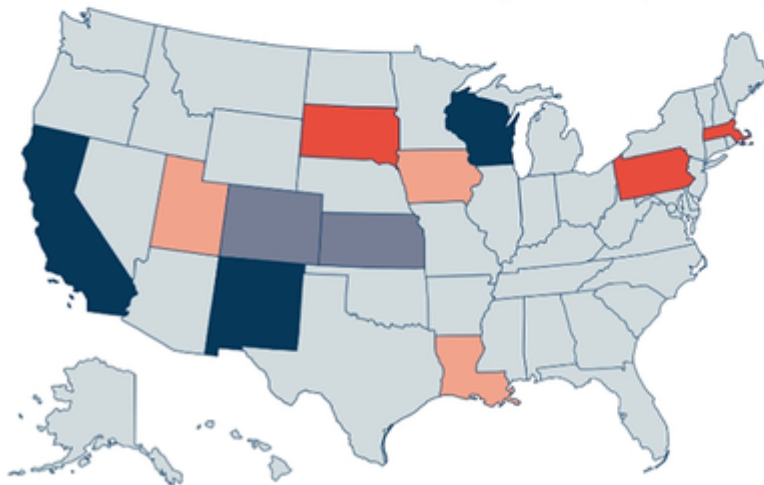


The ESWG seeks to increase engagement and transparency between FEMA and hazard mitigation federal, state or territory, local, and tribal stakeholders.



It does this by gathering information about local mitigation and/or program issues and in turn, increasing visibility of HMA goals, program priorities, and policy development.

Hazard Mitigation Assistance (HMA) External Stakeholder Working Group (ESWG)



- | | |
|--------------------------|---|
| State / Territory | Jim Poppen
South Dakota
Tom Hughes
Pennsylvania
Sarah White
Massachusetts |
| Local / Regional | Jennifer Gerbasi
Terrebonne Parish Consolidated Government, Louisiana
Chris Blinzinger
Provo City, Utah
Jennifer Walker
East Central Intergovernmental Agency of Iowa |
| Tribal Nation | Kymmie Scott
Tolowa Dee ni', California
Kaylynn Gresham
Ojibwa Nation Emergency Management, Wisconsin
Paula Gutierrez
Santa Clara Pueblo, New Mexico |
| Federal (FEMA) | Daniel Jones
Region VIII
Stacy Robarge-Silkner
Region VII
Jennie Orenstein
FEMA HQ |



To connect with the ESWG, submit comments or suggestions to [FEMA's IdeaScale](#)

Project to raise homes, move families in Southwest Coastal Louisiana moves forward

By [Sara Sneath, NOLA.com | The Times-Picayune](#)

A study to determine which homes in Southwest Coastal Louisiana will qualify for voluntary relocation or elevation recently received funding after much back-and-forth between parish officials and the U.S. Army Corps of Engineers.

While financing for the study only accounts for a small chunk of the overall project, it represents the first time a non-structural project within the state's coastal master plan has been given funding, said Coastal Protection and Restoration Authority of Louisiana Board Chairman Chip Kline. Flood proofing businesses, home elevations and voluntary home acquisitions are all considered non-structural measures. The most recent version of the 50-year plan estimates 26,569 homes and businesses across Louisiana will be eligible for help, at a cost of more than \$6 billion.

Read the rest [here](#).

New national flood insurance rates could hit hard in New Orleans

FEMA is now considering adding flooding from heavy rains when defining flood zones

Author: Paul Murphy / Eyewitness News

NEW ORLEANS — Flood insurance premiums could rise while property values fall under a plan to change the way risk is calculated under the National Flood Insurance Program (NFIP).

Right now, the Federal Emergency Management Agency uses flood zone maps as the primary tool to determine rates.

The new rating system, however, would also consider the distance a building is from the coast or other water source, the cost to rebuild and different types of flooding, such as from an intense rainfall.

Full story [here](#).

Continuing Education Committee Reminder!

LFMA is striving to offer educational opportunities throughout the year at the Annual Conference, Workshops, and partnering with FEMA and others to bring classes like the Floodplain Management 101 to our members. If you have ideas for educational opportunities in your community or association wide, please reach out to our Continuing Education Committee Chair, Michelle Gonzales at mgonzales@rostan.com.

Please check your email address listed with LFMA in [Memberclicks](#) and your profile with [ASFPM](#) to ensure both are using the same email address. This will help to ensure your Continuing Education Credits are applied correctly.

ASFPM Region 6 Representative Update

Congressional Testimony -

<https://www.floods.org/n-news-hottopics/article.asp?id=607>

Flood Science Center -

Did you know that ASFPM has a Flood Science Center that can be accessed at <https://www.floodsciencecenter.org/>?

Beginning in the 2017, ASFPM transitioned the Science Services Program to the ASFPM Flood Science Center to support the concept of policy based upon science. The center works to enhance and further develop collaborative relationships with [federal, academic, Foundation and non-governmental organization partners](#) with a mission of studying the technical, biologic, social and economic aspects of flood science.

The goal of the center is to use science to support ASFPM's mission of promoting education, policies and activities that mitigate current and future losses, costs and human suffering caused by flooding, and to protect the natural and beneficial functions of floodplains - all without causing adverse impacts.

The Flood Science Center conducts projects and programs that address national, regional and local needs and are led and supported by [staff who possess a variety of abilities and technical expertise](#) that help us deliver state-of-the-science analysis, technical reports, course materials, mapping applications, project websites and more. The center fosters a collaborative and creative environment providing an unprecedented opportunity to address flood related challenges facing the nation. See our [Research Interests](#) or [contact us](#) to learn more.

Recent Board Meeting -

The ASFPM board met in Madison WI in early February (see the photo below of the frozen lake – it was COLD) specifically to work on addressing member concerns and update the Association's Strategic Plan. Your feedback will be important to ensuring the Strategic Plan becomes a living document that guides the priorities of the association to what the membership needs. Be on the lookout for the updated ASFPM Strategic Plan. The next ASFPM board meeting is at the conference in Cleveland. If you have questions or comments you would like shared at the board meeting, please reach out to Michelle Gonzales at mgonzales@rostan.com.

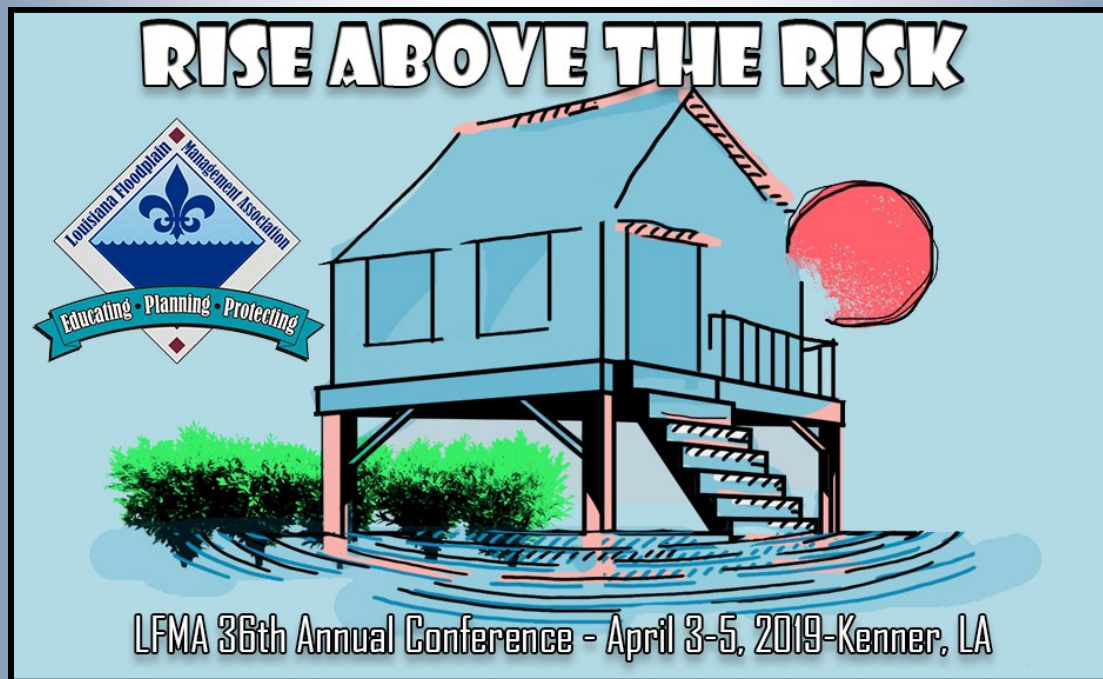


DOTD's latest issue of FACTSHEET is now available!

 LOUISIANA DEPARTMENT OF TRANSPORTATION & DEVELOPMENT	LOUISIANA FLOODPLAIN MANAGEMENT Shawn D. Wilson, Ph.D. SECRETARY	
	FACTSHEET	
March 2019	Issued quarterly by the Louisiana Dept. of Transportation & Development Floodplain Management Section	Volume 19 - Number 1

You can access the newsletter [here](#).

CALENDAR OF EVENTS



The Conference Committee has been working to ensure this year's conference is one to remember. We have technical tours, great speakers, interesting exhibits, receptions, music, and opportunities for networking.

Conference Registration is now open for the 36th Annual Technical & Business Conference. This year will be located in Kenner, LA. Registration is easy through the online Membership portal. **Click this link to register:** [2019 Annual Technical & Business Conference Registration](#)

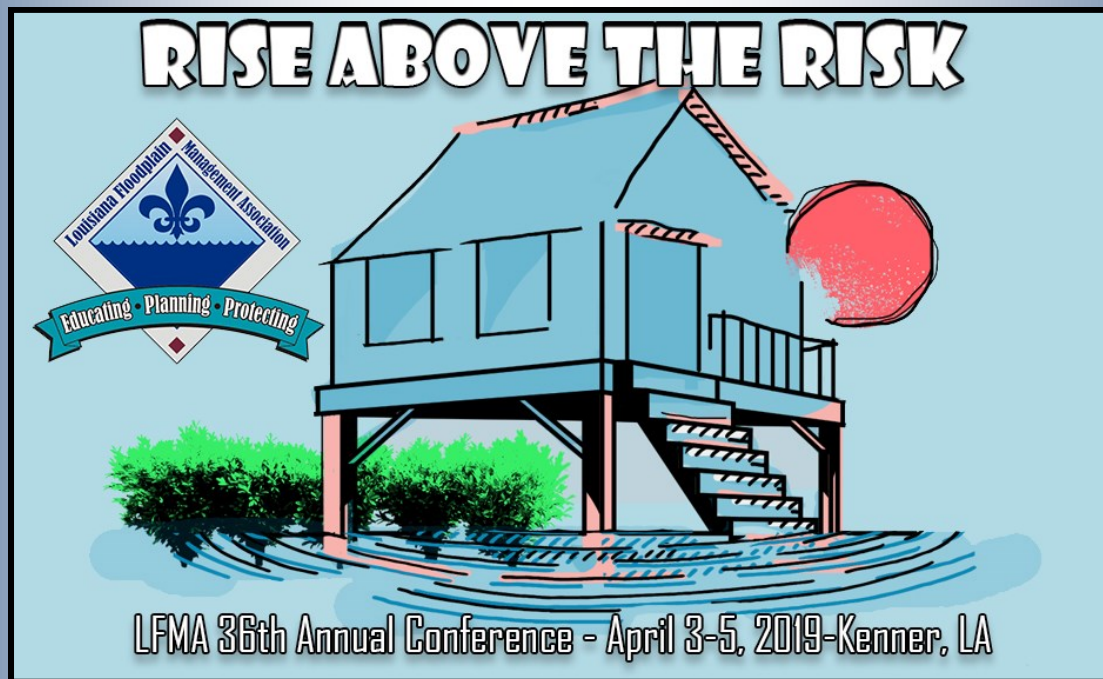
Hotel registration will remain open until March 29, 2019. The group booking link is now ready for use. Simply copy and paste the URL below into your browser to access the exclusive rates available for this group:

Booking Link: <http://group.hilton.com/LouisianaFloodplainManagement>

Hotel: Hilton New Orleans Airport

Group Name: Louisiana Floodplain Management

CALENDAR OF EVENTS



Space is still available for Wednesday's Technical Tours. If you have already registered and want to add a Technical Tour, please contact LFMA Membership Chair - Melissa Becker, CFM (318) 487-5401 ext 16 or via email: treasurer@lfma.org

- **Tech Tour #1 - Open Space Tour - Golf**
 - Chateau Country Club, Kenner LA
- **Tech Tour #2 - Wetland/Marsh Creation Coast Boat Tour**
 - Travel by van then by boat to coastal areas surrounding Jefferson Parish where wetland and marsh creation projects have been implemented that slow storm surge and create benefits to the natural floodplain functions. This area also created a huge Open Space benefit in the recent CRS review.
- **Tech Tour #3 - Residential Elevation Site Visits & Wetland/Marsh Creation Boat Tour**
 - Travel by van to see Severe Repetitive Loss residential properties that were elevated above the designated flood elevation to prevent future flood losses; then hop on the boat to see coastal areas surrounding Jefferson Parish where wetland and marsh creation projects have been implemented that slow storm surge and create benefits to the natural floodplain functions. Both the elevation projects and open space can provide CRS credits.

Conference Agenda



**LOUISIANA FLOODPLAIN
MANAGEMENT ASSOCIATION
36th ANNUAL
TECHNICAL & BUSINESS CONFERENCE
April 3 – 5, 2019 Kenner, Louisiana**



Approved for 12 CFM - CECs

Schedule of Events:

TUESDAY – APRIL 2, 2019

6:00 PM **Board Meeting – Invitation Only**

WEDNESDAY – APRIL 3, 2019

Technical Tours – (Additional Information on Page 2)

Pre-Registration Required for all tours

7:30 – 12:30 **Open Space Tech Tour: \$60**

7:30 – 12:30 **Wetland/Marsh Creation Coast Boat Tour: \$30**

7:30 – 3:00 **Residential Elevation Site Visits & Wetland/Marsh Creation Boat Tour: \$45**

10:00 – 3:30 **Registration**
Grand Ballroom Foyer

SESSION I Grand Ballroom

1:30 – 2:00 **Welcome, Kenner Mayor**
The Hon. Ben Zahn III;
Toby Fruge, LFMA Chair;
Ted Debaene, LFMA Executive Director

2:00 – 2:30 **Chris Brown, CFM – City of Covington**
Drainage System Maintenance Program - CRS

2:30 – 3:00 **Ryan Mast, CFM – City of New Orleans**
Repetitive Loss Area Analysis

3:00 – 3:30 **Jeanne Hornsby, PE - Fenstermaker**
Flood Forecasting

3:30 – 3:45 **B R E A K – Exhibits Open**

3:45 – 5:15 **Dr. Shawn Wilson – LA DOTD Secretary**
Pat Forbes – LA OCD Executive Director
Interactive Panel Regional Issues in
Watershed Management
Moderator: Alexandra Carter

5:30 **Welcome Reception – Hilton Courtyard**
(Wine, Cheese, and Music)
Hospitality Room – Pontchartrain Room

DINNER ON YOUR OWN

THURSDAY – APRIL 4, 2019

SESSION II Grand Ballroom

7:30 – 8:00 **Continental Breakfast**

8:00 – 12:00 **Registration/Exhibits Open**

8:00 – 8:30 **Welcome, Jefferson Parish President**
President Michael S. Yenni;
Kara Moree, LFMA Vice Chair;
Michelle Gonzales, ASFPM R6 Rep Update

8:30 – 9:00 **Ben Pylant, PE, CFM – HALFF**
Unmapped Risk Associated with Local Flood Hazards

9:00 – 9:30 **Don Cummins - Air Data Solutions**
Application of Aerial Imagery for Flood Management

9:30 – 10:00 **Gary O'Neal, CFM & Kim Rvals –**
Quality Engineering & Surveying
FEMA HMA Grant Programs

10:00 – 10:15 **B R E A K – Exhibits Open**

10:15 – 11:45 **CRS BREAK OUT SESSION – Barataria A/B**
Maggie Talley & Nic LeBlanc
(Additional Information on Page 2)

10:15 – 11:15 **J. Paul Abrams – Smart Vent**
Sustaining Foundations in Flood Hazard Areas

11:15 – 11:45 **Jennifer Gerbasi, CFM – Terrebonne Parish**
Incentives for private investment in flood safe building

12:15 – 1:45 **Awards Luncheon – Grand Ballroom**
Toby Fruge, CFM – LFMA Chair

Keynote Speaker: Dana Brown FASLA, PLA, AICP, LEED AP –
Dana Brown & Associates Community Adaptation for Resilience

SESSION III Grand Ballroom

2:15 – 2:45 **Jacob Lesue, PE, CFM & Seth Bradley, PE –**
Dewberry The Potential of BLE Data:
How Communities Can Use This Product to Enhance
Their Floodplain Management Program

2:45 – 3:15 **Eric Zgonina, PE, CFM - Dewberry**
WAT Way to Geaux? A New Watershed Planning Tool
for Southeast Louisiana in the Amite Watershed

3:15 – 4:00 **Susan Veillon - DOTD & Jerri Daniels - Dewberry**
CTP Business Plan FY 18 and FY 19 & The FIG

5:00 **LFMA Party Time - Hilton Pool Area**
(Food, Spirits, Music, Fun and Friends)

Airport Hilton – 901 Airline Drive Kenner, LA 70062

Conference Agenda

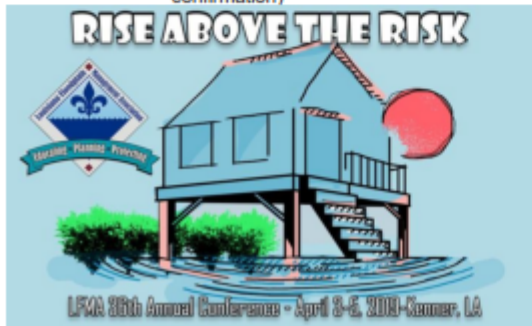
FRIDAY – APRIL 5, 2019

SESSION IV Grand Ballroom

- 8:00 – 8:30 **Continental Breakfast**
- 8:30 **Welcome** - Melissa Becker, LFMA Treasurer
- 8:30 – 9:00 **John Miles – FEMA R6**
Post Disaster Sub-Dam Program Review
- 9:00 – 9:30 **Darrin Dutton – FEMA R6**
Surviving a CAV
- 9:30 – 10:00 **Jamelyn Austin Trucks, CFM - Atkins**
Mitigation Finance – Resilience
- 9:30 – 11:30 **CFM Refresher – Breakout Session**
Ben Pylant – HALFF
(Additional Information on Right)
- 10:00 – 10:15 **B R E A K**
- 10:15 – 11:00 **John Schexnayder - Wood**
Floodplain Mapping
- 11:00 – 11:30 **Justin Kozak – Center for Planning Excellence**
Land Use Community Planning
- 11:30 – 11:45 **General Business Meeting Election Results**
Ted Debaene, CFM, Executive Director
- 11:45 – 12:00 **2018 Conference End Wrap Up**
Toby Fruge, CFM – LFMA Chair
Michelle Gonzales, CFM – Conference Chair

LUNCH ON YOUR OWN

- 1:30 – 4:30 **CFM Exam, Barataria A/B**
(Pre-register with ASFPM at least two weeks prior to the conference and receive confirmation)



TECHNICAL INFORMATION:

- 7:30 – 12:30 **Open Space Tech Tour: \$60**
Chateau Country Club – 3600 Chateau Blvd Kenner, LA 70062
<https://www.chateaucountryclub.com/>
Questions contact: Colin Sternhell colinsternhell@solutiont.com
- 7:30 – 12:30 **Wetland/Marsh Creation Coast Boat Tour: \$30**
Includes Transportation Meet in Hilton Lobby @ 7:15
Travel by van then by boat to coastal areas surrounding Jefferson Parish where wetland and marsh creation projects have been implemented that slow storm surge and create benefits to the natural floodplain functions. This area also created a huge Open Space benefit in the recent CRS review.
Questions contact:
Maggie Talley mtalley@jeffparish.net
- 7:30 – 3:00 **Residential Elevation Site Visits & Wetland/Marsh Creation Boat Tour: \$45**
Includes Transportation Meet in Hilton Lobby @ 7:15am (lunch provided)
Travel by van to see Severe Repetitive Loss residential properties that were elevated above the designated flood elevation to prevent future flood losses; then hop on the boat to see coastal areas surrounding Jefferson Parish where wetland and marsh creation projects have been implemented that slow storm surge and create benefits to the natural floodplain functions. Both the elevation projects and open space can provide CRS credits.
*Participants on this tour will NOT return to the Hilton for the beginning of Session I
Questions contact:
Vicki Holmes vickih@orleansshoring.com

BREAK OUT SESSION INFORMATION:

- 10:15 – 11:45 **CRS BREAK OUT SESSION – Barataria A/B**
Maggie Talley & Nic LeBlanc
LOCAL CRS COORDINATORS ONLY

In the past few years, the CRS User's groups have met quickly after lunch to introduce each other. This year, Nic (FLOAT) and Maggie (JUMP) will host a Break Out Session for Local CRS Coordinators ONLY. There will be time to each meet each other, discuss some of the things happening in your community, and gain tips from Maggie and Nic on ways their communities of Jefferson and Mandeville were able to improve class ratings in the past year.

- 9:30 – 11:30 **CFM Refresher / Preparation – Barataria A/B**
Ben Pylant - HALFF
Reserved for CFM Exam Takers

A quick high-level review of Floodplain Management concepts is being offered for individuals that are new to the floodplain management field or need a refresher on the basic concepts of the field. The class is first reserved for individuals signed up for the CFM test.

CALENDAR OF EVENTS

ASFPM's 43rd annual national conference in Cleveland, OH
"Flood Fest 2019: The Mitigation and Resilience Tour"



May 19-23, 2019

Huntington Convention Center

300 Lakeside Avenue

Cleveland, OH 44113

Click [here](#) for more details!

CALENDAR OF EVENTS



June 24—28, 2019

Alexandria International Airport
Conference Room—3rd Floor
1100 Frank Andrews Blvd.
Alexandria, LA 71303

Details on registration will be posted
to the LFMA website. www.lfma.org

Class size is limited to 35



FEMA

SAVE THE DATE !!!

TRAINING OPPORTUNITY

E0273—Managing Floodplain Development through the NFIP

Course Description:

This course provides an opportunity for local officials responsible for administering their floodplain regulations. The course will focus on the National Flood Insurance Program (NFIP) and concepts of floodplain management, maps and studies, ordinance administration, and the relationship between floodplain management and flood insurance.

Schedule:

6/24-6/25: Classroom Training

Registration for the Class will be through the [LFMA Membership Portal](#)

Contact for more information: Melissa Becker at mbecker@rapc.info

We will host the CFM Exam!!

6/28: CFM Test

Registration for the CFM exam is through ASFPM. You must apply at least two weeks in advance to take the exam. [Register for Exam](#)

CALENDAR OF EVENTS

LFMA Summer Workshop

July 19, 2019

Scott, LA



Workshop Contact: Tammy Vincent

Stay tuned for more details!

Louisiana Floodplain Management Association

P.O. Box 64725
Baton Rouge, LA 70896

LFMA Board Members and Regional Representatives

CHAIRMAN: Toby Fruge', PE, CFM
(225) 926-5125
toby@owenandwhite.com

**VICE CHAIR,
CAP:** Kara Moree, CFM
(225) 755-2120
kmoree@bucharthorn.com

SECRETARY: Darla Duet CFM
(985) 537-7603
darlad@lafourchegov.org

**TREASURER,
MEMBERSHIP:** Melissa Becker, CFM
(318) 487-5401
mbecker@rapc.info

**EXECUTIVE
DIRECTOR:** Theodore E. DeBaene, PE, CFM
(225) 926-5125
tdebaene@owenandwhite.com

DRT: Shandy Heil, CFM
(225) 603-4090
shandyogeaheil@gmail.com

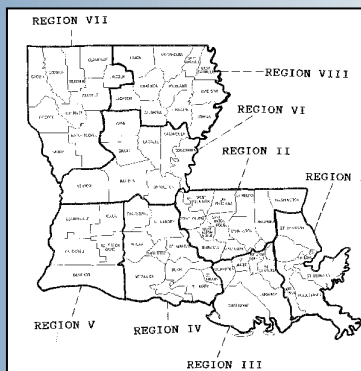


**WORKSHOP
COORDINATOR:** Darla Duet CFM
(985) 537-7603
darlad@lafourchegov.org

CONTINUING ED: Michelle Gonzales
(225) 223-2719
mgonzales@rostan.com

**NEWSLETTER
EDITOR:** Vicki Holmes, CFM
(504) 919-0066
vickih@orleansshoring.com

**STATE NFIP
COORDINATOR:** Cindy O'Neal, CFM
(225) 379-3005
Cindy.ONeal@LA.GOV



Region I
Kim Reeves, CFM
(504) 481-5132
tkreeves@cox.net
Mike Hunnicutt, CFM (alt)
(202) 394-8493
mandjhunnicutt@yahoo.com
Region II
Jerri Daniels, CFM
(504) 872-3776
jdaniels@dewberry.com
Bruce Dyson, PE, CFM (alt)
(225) 766-5358
bdyson@bha-engineers.com

Region III
Lisa Ledet, CFM
(985) 873-6567
lisaledet@tpcq.org
Region IV
Bonnie Anderson, CFM
(337) 654-9312
floodmgr@gmail.com
Region V
Dana Watkins, CFM
(337) 721-3600
dwatkins@cppj.net

Region VI
Melissa Becker, CFM
(318) 487-5401
mbecker@rapc.info
Region VII
Juanita Fowler, CFM
(318) 357-3840
juanita@natchitochesla.gov
Region VIII
Larry Walters, CBO, CFM
(318) 747-2454
lwalters@ibts.org
Lisa Richardson, CFM (alt)
(318) 398-9780
lrichadson@oppi.org

Floodwatch is published by the Louisiana Floodplain Management Association. Information and opinions contained herein do not necessarily reflect the views of all members. Items for publication and other editorial matters should be directed to the Editor: vickih@orleansshoring.com